



CASE STUDIES

ethOss[®]

Grow
Stronger[®]

EthOss Regeneration Ltd
8 Ryefield Court, Silsden, BD20 0DL, UK
www.ethoss.dental | info@ethoss.dental

TWO WALL PERIODONTAL BONE DEFECT

Female, 40 years old

Non-surgical treatment worked to reduce the inflammation but at this site the deep intrabony defect prevented the re-establishment of a normal sulcus

8mm probing pocket depth on tooth 42(d)

Case from Dr Renukanth Raman, Malaysia



1. Initial situation



2. Pocket depth 8mm



3. Pre-op scan shows what appears to be two-wall defect



4. Less invasive papilla-preserving flap is raised as no collagen membrane is required



5. Defect visible

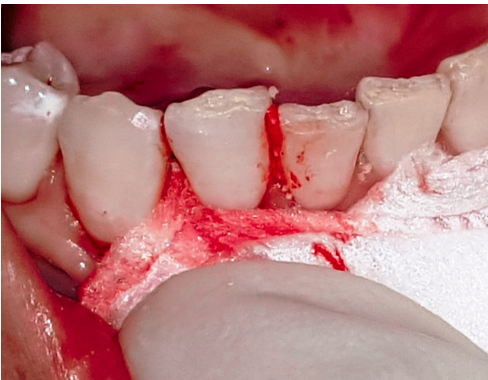
TWO WALL PERIODONTAL BONE DEFECT



6. Osseous and root surface debridement reveals deep two-walled intrabony defect



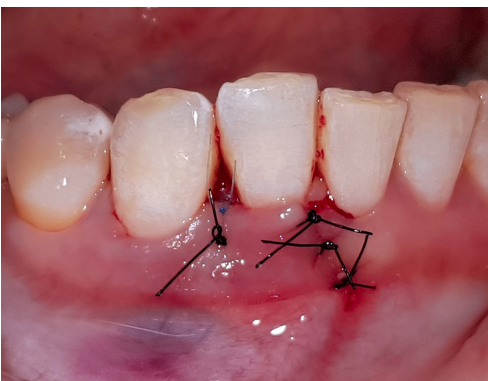
7. EthOss® bone grafting material placed and shaped/ moulded



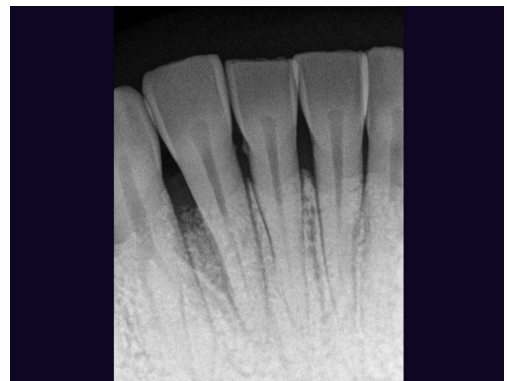
8. EthOss bone grafting material dried with sterile gauze for 5-6 minutes



9. EthOss bone grafting material sets



10. Suturing, passive primary closure



11. Radiograph immediately following graft placement

TWO WALL PERIODONTAL BONE DEFECT



12. 1 week post op



13. Radiograph at 2 months, slight radiopaque view of grafted area, this is to be expected as the Calcium Sulphate resorbs



14. 1 year post op, 3mm probing pocket depth, good soft tissue healing



15. Radiograph at 1 year



GROW STRONGER[®]

USEFUL RESOURCES

RECOMMENDED CLINICAL PROTOCOL

Clinical study showcasing recommended clinical protocol for EthOss bone grafting material

[Download](#)

SURGICAL GUIDELINES

The official recommended guide on how to use EthOss bone grafting material

[Download](#)

HOW TO MIX ETHOSS BONE GRAFTING MATERIAL

Explainer video

[Watch](#)