

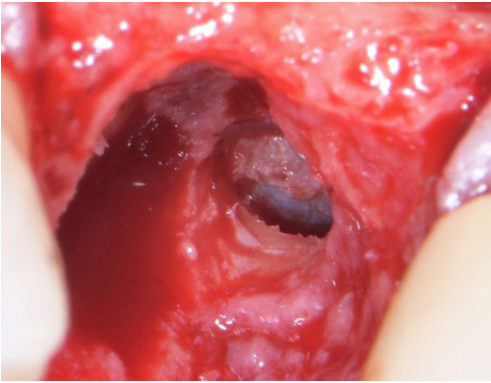


# CASE STUDIES

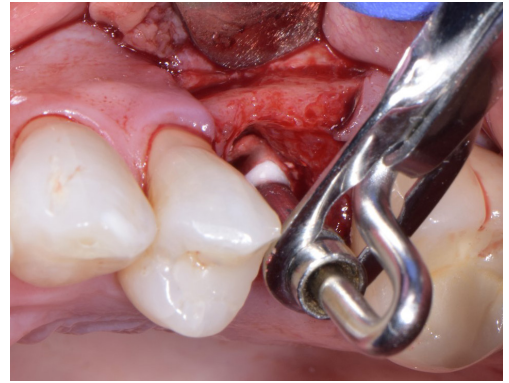
**ethOss**<sup>®</sup> **Grow  
Stronger\_**

EthOss Regeneration Ltd  
8 Ryefield Court, Silsden, BD20 0DL, UK  
[www.ethoss.dental](http://www.ethoss.dental) | [info@ethoss.dental](mailto:info@ethoss.dental)

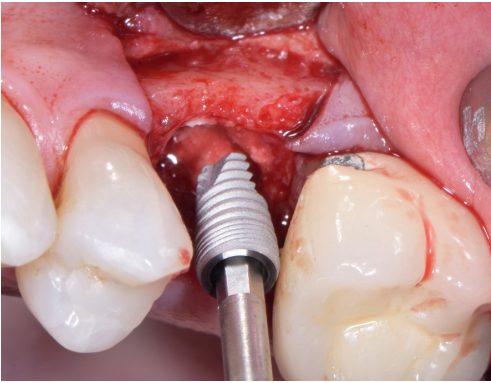
# SINUS AUGMENTATION - CRESTAL APPROACH WITH DASK



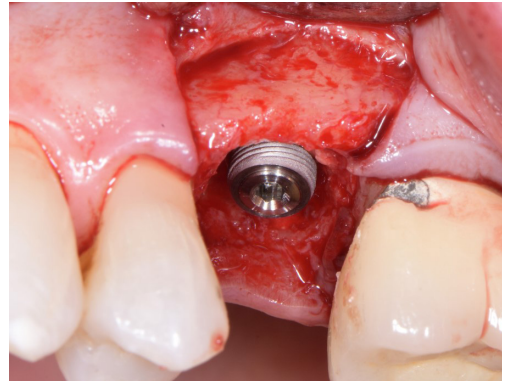
1. Crestal Osteotomy with DASK.



2. EthOss placed into sinus cavity with amalgam gun.



3. Implant placed into grafted site.



4. Implant placed.



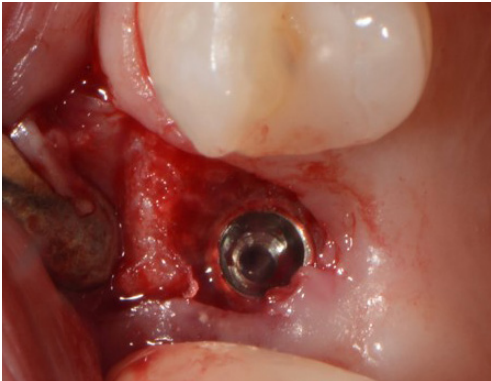
5. Additional grafting with drier mix of EthOss.



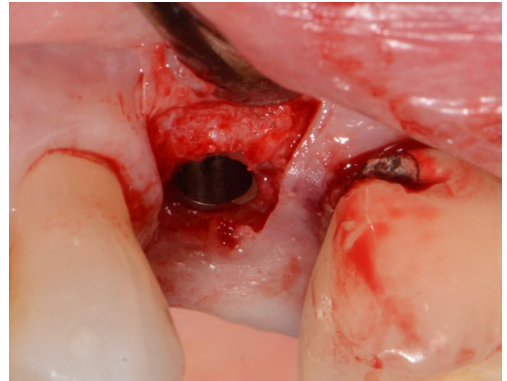
6. Flap raised at 10 weeks - new host bone growing over implant.



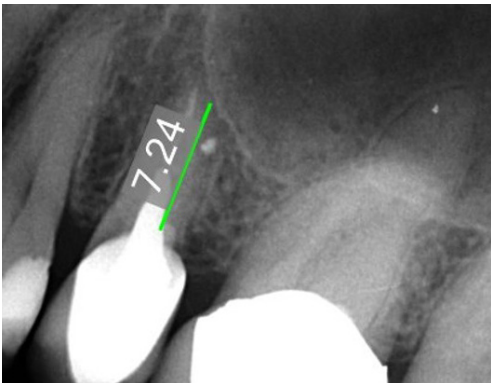
# SINUS AUGMENTATION - CRESTAL APPROACH WITH DASK



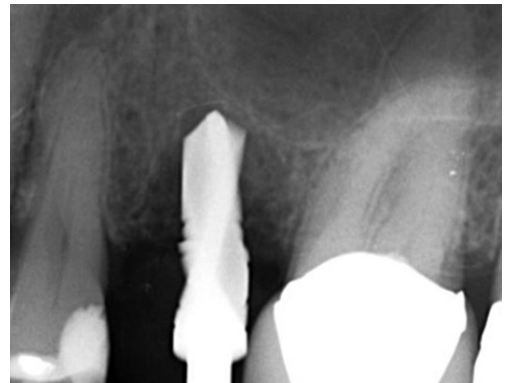
7. Round bur needed to access the site.



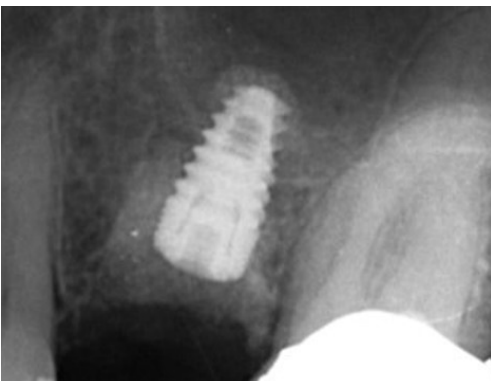
8. New host bone.



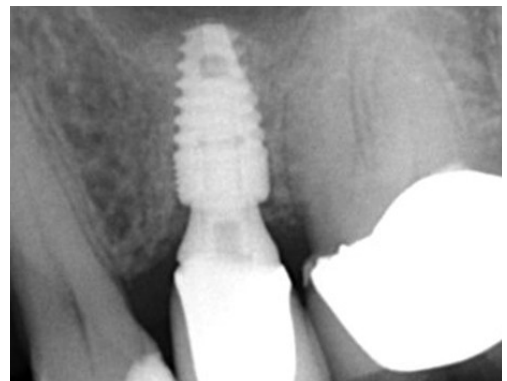
9. Initial situation - tooth to be extracted.



10. 3 weeks following simple extraction. Note sinus floor - will require sinus augmentation.



11. EthOss graft and implant placed.



12. Loaded 6 months.



# GROW STRONGER

## USEFUL RESOURCES

### RECOMMENDED CLINICAL PROTOCOL

*Clinical study showcasing recommended clinical protocol for EthOss*

Download

### SURGICAL GUIDELINES

*The official recommended guide on how to use EthOss*

Download

### HOW TO MIX ETHOSS

*Explainer video*

Watch